

iP2700 / iP2770 / iP2780

SIMPLIFIED SERVICE MANUAL

1. LIST OF ERROR DISPLAY / TROUBLESHOOTING
 - 1-1. Operator Call Errors (Alarm Lamp Lit In Orange)
 - 1-2. Service Call Errors (by Cyclic Blinking of Alarm and Power Lamps)
2. ADJUSTMENT / SETTINGS
 - 2-1. Service Mode
 - 2-2. User Mode
 - 2-3. Special Notes on Servicing
 - 2-4. Grease Application
3. EXTERNAL VIEW / PARTS LIST
 - 3-1. External Housing, Power Supply, Logic Board
 - 3-2. Print Unit (1/2)
 - 3-3. Print Unit (2/2)
 - 3-4. Parts List

QY8-13CR-000

Rev. 00

Jan. 2010

Canon Inc.

1. LIST OF ERROR DISPLAY / TROUBLESHOOTING

Errors and warnings are displayed by the following ways:

- Operator call errors are indicated by the Alarm lamp lit in orange.
- Messages during printing from a computer are displayed on the printer driver Status Monitor.
- Error codes are printed in the "operator call/service call error record" area in EEPROM information print.

Buttons valid when an operator call error occurs:

- ON button: To turn the printer off and on again.
- Resume/Cancel button: To cancel the job at error occurrence, and to clear the error.

1-1. Operator Call Errors (Alarm Lamp Lit In Orange)

| Error | Error code | LED (Blinking in orange) | Status Monitor message | Solution |
|---|------------|--------------------------|--|--|
| No paper in the rear tray. | [1000] | 2 times | Paper has run out. Load paper. Press the printer's RESUME button. | Set the paper in the rear tray, and press the Resume/Cancel button. |
| Paper jam. | [1300] | 3 times | Paper is jammed. Remove the jammed paper. Press the printer's RESUME button. Printing resumes from the next paper. | Remove the jammed paper, and press the Resume/Cancel button. |
| Ink cartridge not properly installed. | [1687] | 4 times | An ink cartridge is not installed properly. Open the printer's cover, firmly push down the ink cartridge locking cover, and then make sure the ink cartridge is installed properly. Then close the printer's cover. | Re-set the ink cartridge properly. If the error is not cleared, the ink cartridge may be defective. Replace the ink cartridge. |
| Ink cartridge not installed. | [1401] | 5 times | The following ink cartridge cannot be recognized. Color Black Printing cannot be executed because the ink cartridge may not be installed properly or may not be compatible with this printer. Install the appropriate ink cartridge. If you want to cancel printing, click Cancel Printing. | Install the ink cartridge. If the error is not cleared, the ink cartridge may be defective. Replace the ink cartridge. |
| Ink cartridge temperature sensor error. | [1403] | 5 times | The type of print head is incorrect. Install the print head. | Re-set the ink cartridge. If the error is not cleared, the ink cartridge may be defective. Replace the ink cartridge. |

| Error | Error code | LED (Blinking in orange) | Status Monitor message | Solution |
|--|------------|--------------------------|---|--|
| Non-supported ink cartridge installed. | [1485] | 5 times | <p>The following ink cartridge cannot be recognized.</p> <p>Color Black</p> <p>Printing cannot be executed because the ink cartridge may not be installed properly or may not be compatible with this printer.</p> <p>Install the appropriate ink cartridge. If you want to cancel printing, click Cancel Printing.</p> | A non-supported ink cartridge is installed. Install the supported ink cartridge. If the error is not cleared, the ink cartridge may be defective. Replace the ink cartridge. |
| Ink cartridge in a wrong position. | [1486] | 7 times | <p>An ink cartridge is not installed in the correct position.</p> <p>Install the following ink cartridge in the appropriate position. If printing is in progress, cancel printing and install the ink cartridge.</p> <p>Color Black</p> | Install the ink cartridge(s) in the correct position. If the error is not cleared, the ink cartridge may be defective. Replace the ink cartridge. |
| Multiple ink cartridges of the same color installed. | [1487] | 7 times | <p>More than one ink cartridge of the following type is installed.</p> <p>Color Black</p> <p>Use only one ink cartridge per type at a time.</p> | Replace the wrong ink cartridge(s) with the correct one(s). If the error is not cleared, the ink cartridge may be defective. Replace the ink cartridge. |
| Warning: The ink absorber becomes almost full. | [1700] | 8 times | <p>The ink absorber is almost full. Press the printer's RESUME button to continue printing. The printer will soon require servicing to replace the ink absorber. Contact the support center or the service center. The ink absorber can only be replaced by a qualified technician.</p> | Replace the ink absorber, and reset its counter. (See 2-1, Service Mode.) Pressing the Resume/Cancel button will exit the error, and enable printing without replacing the ink absorber. However, when the ink absorber becomes full, no further printing can be performed unless the applicable ink absorber is replaced. |

| Error | Error code | LED (Blinking in orange) | Status Monitor message | Solution |
|---|------------|--------------------------|--|--|
| The remaining ink amount unknown. | [1686] | 13 times | <p>The following ink may have run out.</p> <p>Color Black</p> <p>The function for detecting the remaining ink level will be disabled since the ink level cannot be correctly detected.</p> <p>If you want to continue printing without this function, press the printer's RESUME button for at least 5 seconds.</p> <p>Canon recommends to use new genuine Canon cartridges in order to obtain optimum qualities.</p> <p>Please be advised that Canon shall not be liable for any malfunction or trouble caused by continuation of printing under the ink out condition.</p> | <p>Replace the applicable ink cartridge with a new one. Printing without replacing the ink cartridge can damage the printer.</p> <p>However, to continue printing without replacing the ink cartridge(s), press the Resume/Cancel button for 5 sec. or longer to disable the function to detect the remaining ink amount. After the operation, it is recorded in the printer EEPROM that the function to detect the remaining ink amount was disabled.</p> |
| Ink cartridge not recognized (region code error). | [1684] | 14 times | <p>The following ink cartridge cannot be recognized.</p> <p>Color Black</p> <p>Printing cannot be executed because the ink cartridge may not be installed properly or may not be compatible with this printer.</p> <p>Install the appropriate ink cartridge. If you want to cancel printing, click Cancel Printing.</p> | <p>A non-supported ink cartridge (whose region code differs from the printer's region code) is installed. Install the supported ink cartridge. If the error is not cleared, the ink cartridge may be defective. Replace the ink cartridge.</p> |
| Ink cartridge hardware error. | [1682] | 15 times | <p>The following ink cartridge cannot be recognized.</p> <p>Color Black</p> <p>Printing cannot be executed because the ink cartridge may not be installed properly or may not be compatible with this printer.</p> <p>Install the appropriate ink cartridge. If you want to cancel printing, click Cancel Printing.</p> | <p>Re-set the ink cartridge. If the error is not cleared, the ink cartridge may be defective. Replace the ink cartridge.</p> |

| Error | Error code | LED (Blinking in orange) | Status Monitor message | Solution |
|----------------------|------------|--------------------------|---|--|
| No ink (no raw ink). | [1688] | 16 times | <p>The following ink has run out.</p> <p>Color Black</p> <p>Replace the ink cartridge and close the cover.</p> <p>If printing is in progress and you want to continue printing, press the printer's RESUME button for at least 5 seconds with the ink cartridge installed. Then printing can continue under the ink out condition.</p> <p>The function for detecting the remaining ink level will be disabled.</p> <p>Replace the empty ink cartridge immediately after the printing.</p> <p>The resulting print quality is not satisfactory, if printing is continued under the ink out condition.</p> | <p>Replace the empty ink cartridge(s). Printing with an empty ink cartridge can damage the printer.</p> <p>However, to continue printing without replacing the ink cartridge(s), press the Resume/Cancel button for 5 sec. or longer to disable the function to detect the remaining ink amount. After the operation, it is recorded in the printer that the function to detect the remaining ink amount was disabled.</p> |

1-2. Service Call Errors (by Cyclic Blinking of Alarm and Power Lamps)

| Error | Error code | Cycles of blinking of Alarm and Power LEDs | Conditions | Solution (Check points and replacement items) |
|-----------------------------------|---------------------------------------|--|--|---|
| Carriage error | [5100] | 2 times | An error occurred in the carriage encoder signal. | 1) Foreign material or paper debris that obstructs the carriage movement; remove foreign material. 2) Smearing or scratches on the timing slit film; clean the timing slit film. 3) Part replacement: - Timing slit film - Carriage unit - Logic board |
| Line feed error | [6000] | 3 times | An error occurred in the LF encoder signal. | 1) Part replacement: - Timing slit disk film - Logic board |
| ASF cam sensor error | [5700] | 5 times | An error occurred in the ASF cam sensor (during paper feeding from the rear tray). | 1) Part replacement: - ASF / PE sensor unit - Drive unit - Logic board |
| Internal temperature error | [5400] | 6 times | The internal temperature is not normal. | 1) Part replacement: - Logic board - Ink cartridge |
| Ink absorber full | Japan: [5B01] Others: [5B00] | 7 times | The ink absorber is supposed to be full. | 1) Part replacement: - Ink absorber kit 2) Ink absorber counter value in the EEPROM; reset the ink absorber counter. |
| Print head temperature rise error | [5200] | 8 times | The print head temperature exceeded the specified value. | 1) Part replacement: - Ink cartridge - Logic board |
| EEPROM error | [6800] [6801] | 9 times | A problem occurred in reading from or writing to the EEPROM. | 1) Part replacement: - Logic board |
| VH monitor error | [B200] | 10 times | The print head voltage is not normal. | 1) Part replacement: - Ink cartridge - Logic board |

2. ADJUSTMENT / SETTINGS

2-1. Service Mode

< Service mode operation procedures >

Use the Service Tool on the connected computer.

- 1) Start the printer in the service mode.
 - i. With the printer power turned off, while pressing the Resume/Cancel button, press and hold the ON button. (DO NOT release the buttons).
 - ii. When the Power LED lights in green, while holding the ON button, release the Resume/Cancel button. (DO NOT release the ON button.)
 - iii. While holding the ON button, press the Resume/Cancel button 5 times, and then release both the ON and Resume/Cancel buttons. (Each time the Resume/Cancel button is pressed, the Alarm and Power LEDs light alternately, Alarm in orange and Power in green, starting with Alarm LED.)
 - iv. When the Power LED lights in green, the printer is ready for the service mode operation.
- 2) Start the Service Tool on the connected computer.
 - i. When a button is clicked in the Service Tool dialog box, that function is performed. During operation of the selected function, all the Service Tool buttons are dimmed and inactive.
 - ii. When the operation is completed, "A function was finished." is displayed, and another function can be selected.
 - iii. If a non-supported function is selected, "Error!" is displayed. Click **OK** in the error message dialog box to exit the error.

< Service Tool Functions >

The screenshot shows the Service Tool software interface with the following numbered callouts:

- (1) Test Print
- (2) EEPROM
- (3) Nozzle Check
- (4) Integration
- (5) EEPROM (Save)
- (6) CD-R
- (7) LF/EJECT
- (8) Left Margin
- (9) Auto Cleaning
- (10) Deep Cleaning
- (11) Main (Clear Ink Counter)
- (12) Platen (Clear Ink Counter)
- (13) EEPROM Clear (Operation)
- (14) Panel Check (Operation)
- (15) Region: JPN (Set Destination)
- (16) X: -1.0, Y: -1.0 (CD-R Correction)
- (17) LF: Pattern0, EJECT: Pattern0 (LF/EJECT Correction)
- (18) Paper Source: RearTray, back side of paper, Correction Value: -3 (Left Margin Correction)
- (19) Absorber: Main, Counter Value(%): 0 (Ink Absorber Counter)
- (20) Counter Value(%): 0 (Wetting Liquid Counter)
- (21) Flatbed Scanner (Set)

| No. | Name | Function | Remarks |
|------|---------------|---|--|
| (1) | Test Print | Service test print | Service test print: - Model name - ROM version - Ink absorber counter value (ink amount in the ink absorber) - USB serial number - Destination - EEPROM information - Barcode (model name + destination), etc. |
| (2) | EEPROM | EEPROM information print | The dialog box opens to select the paper source. Select Rear tray , and click OK . EEPROM information print: - Model name - Destination - ROM version - Ink absorber counter value (ink amount in the ink absorber) - Print information - Error information, etc. |
| (3) | Nozzle Check | Nozzle check pattern print | The dialog box opens to select the paper source. Select Rear tray , and click OK . The same nozzle check pattern as the one in the user mode is printed. |
| (4) | Integration | Unified inspection pattern print | The dialog box opens to select the paper source. Select Rear tray , and click OK . The unified inspection pattern (for reduction of time required for the inspection) is printed. |
| (5)* | EEPROM | EEPROM information saving | When no printing can be performed due to a problem, the EEPROM information is displayed on the computer or is saved to the computer as a text file. To save the EEPROM information, click Save As in the EEPROM information window, and specify a desired location and file name. |
| (6) | CD-R | CD-R check pattern print | Not used. |
| (7) | LF / Eject | LF / Eject correction pattern print | Not used. |
| (8) | Left Margin | Left margin pattern print | Not used. |
| (9)* | Auto Cleaning | Enabling / disabling of automatic print head cleaning | Automatic print head cleaning prior to printing (disabled at default). Select this option to enable the cleaning. |
| (10) | Deep Cleaning | Print head deep cleaning | Cleaning of both Black and Color at the same time. |
| (11) | Main | Main ink absorber counter resetting | Set a sheet of A4 or Letter sized plain paper in the rear tray. After the ink absorber counter is reset, the counter value (in %) is printed automatically. |

| No. | Name | Function | Remarks |
|-----------|------------------------|--|---|
| (12) | Platen | Platen ink absorber counter resetting | Not used. |
| (13) | EEPROM Clear | EEPROM initialization | The following items are NOT initialized, and the shipment arrival flag is not on: - Destination settings - Ink absorber counter value - Record of disabling the function to detect the remaining ink amount - Printer serial number - Ink cartridge region code - Record of ink absorber counter resetting and setting - Record of repair at the production site |
| (14) | Panel Check | Button and LCD test | Not used. |
| (15) | Set Destination | Destination settings | Select the destination, and click Set . ASA, AUS, BRA, CHN, CND, EUR, JPN, KOR, LTN, TWN, USA |
| (16) | CD-R Correction | CD / DVD print position correction (X and Y direction) | Not used. |
| (17) | LF / EJECT Correction | LF / Eject correction value setting | Not used. |
| (18) | Left Margin Correction | Left margin correction value setting | Not used. |
| (19) | Ink Absorber Counter | Ink absorber counter setting | See " Ink absorber counter setting " below. |
| (20) | Wetting Liquid Counter | Wetting liquid counter setting | Not used. |
| (21) * | Flatbed Scanner | Individual scanner adjustment | Not used. |

* New functions in Service Tool version 1.071:

- (5) EEPROM information saving
- (9) Enabling / disabling of automatic print head cleaning
- (21) Individual scanner adjustment

< Ink absorber counter setting >

Set the ink absorber counter value to a new EEPROM after the logic board is replaced in servicing.

- 1) Before replacement of the logic board, check the ink absorber counter value in EEPROM information print.
- 2) In the **Ink Absorber Counter** section of the Service Tool, select **Main** from the **Absorber** pull-down menu.
- 3) From the **Counter Value(%)** pull-down menu, select the value (in 10% increments) which is the closest to the actual counter value confirmed before replacement of the logic board.
- 4) Click **Set**.

2-2. User Mode

| Function | Procedures | Remarks |
|---|--|---|
| Nozzle check pattern printing | Perform from the printer driver Maintenance tab. | Set a sheet of plain paper (A4 or Letter) in the rear tray. |
| Print head cleaning | Perform from the printer driver Maintenance tab. | Unclogging of the print head nozzles, and maintenance to keep the print head conditions good. If there is a missing portion or white streaks in the nozzle check pattern printout, perform this cleaning. |
| Print head deep cleaning | Perform from the printer driver Maintenance tab. | If print head cleaning is not effective, perform this cleaning. Since the deep cleaning consumes more ink than regular cleaning, it is recommended to perform deep cleaning only when necessary. |
| Print head alignment | Perform from the printer driver Maintenance tab. | Set a sheet of plain paper (A4 or Letter) in the rear tray. |
| Ink cartridge settings | Perform from the printer driver Maintenance tab. | Specify the ink cartridge to be used for printing. |
| Paper feed roller cleaning | Perform from the printer driver Maintenance tab. | The paper feed rollers rotate while being pushed to the paper lifting plate. Since the rollers will wear out in this cleaning, it is recommended that you perform this only when necessary. |
| Bottom plate cleaning | Perform from the printer driver Maintenance tab. | Cleaning of the platen ribs when the back side of paper gets smeared. Fold a sheet of plain paper (A4 or Letter) crosswise in half, then unfold and set it in the rear tray with the folded ridge facing down. |
| Reduction of printout smudging or paper scratches | Perform from the printer driver Maintenance tab. | Select Custom Settings , and Prevent paper abrasion , then set a period of time to wait for ink to be dried. |

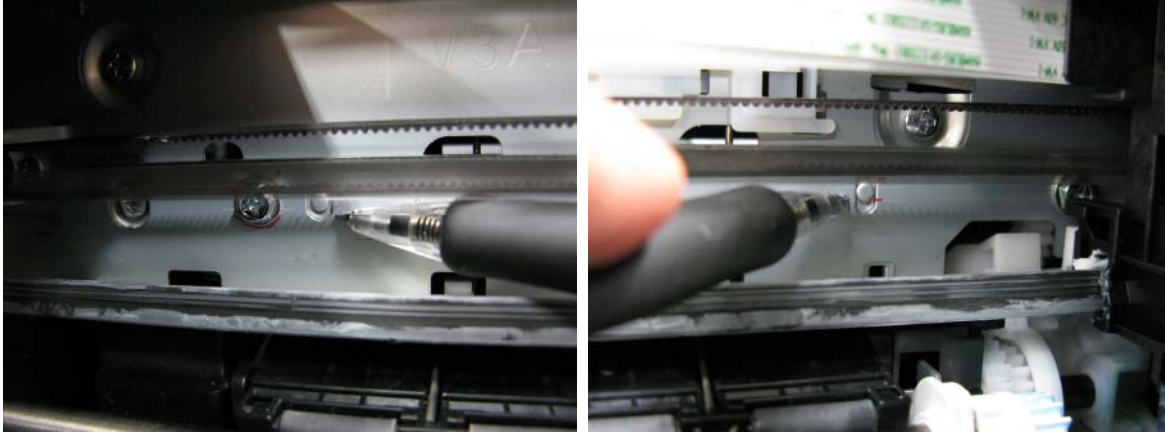
2-3. Special Notes on Servicing

(1) Carriage rail and main chassis adjustment

< Carriage rail >

Perform the following adjustments when attaching the carriage rail:

- 1) Before loosening the screws, mark their positions on the rail.



- 2) In attaching the carriage rail, make sure that the screws fit to the marks made in step 1) respectively, then fasten the screws.
- 3) Be sure to perform the confirmation test detailed below; confirm that the print quality is proper and the print head is not contacting the paper.

< Main chassis >

After the main chassis is attached, be sure to perform the confirmation test detailed below; confirm that the print quality is proper and the print head is not contacting the paper.

< Confirmation test >

Using Photo Paper Pro Platinum, print an image and confirm that the print quality is proper, and the print head is free from contacting the paper.

If the print quality is not proper, or the print head contacts the paper, adjust the head-to-paper distance in the following procedures:

< How to adjust the head-to-paper distance >

- 1) Mark the current position of the screws at the both ends of the chassis. (See the step 1 of the carriage rail adjustment above.)
- 2) Loosen the screws, and adjust the head-to-paper distance.
 - To prevent the print head from contacting the paper, raise the carriage rail from the current position.
 - To improve the print quality, lower the carriage rail from the current position.

(2) AC adapter replacement

When installing the AC adapter, if the DC harness cables (between the AC adapter and the logic board) are pushed into the bottom frame, an extra portion of the harness cables can enter the drive unit, preventing paper feeding or resulting in breakage of the cable.

Arrange the DC harness cables in the following procedures at replacement of the AC adapter:

- 1) Connect the AC adapter and the DC harness.



Caution:
The cable can get into the drive unit, causing a problem.

- 2) Arrange the DC harness cables as shown below so that they will not enter the drive unit.



Arrange the cables between the bottom frame and the AC adapter.
If extra portion is long, fix the cables with tape, etc.

(3) Ink absorber replacement

The following two replacement methods are available for the iP2700 / iP2770 / iP2780.

| | Difficulties | Ink absorber volume to be replaced | Print yield after replacement | Time required |
|---------------------|--------------|------------------------------------|-------------------------------|-----------------|
| Partial Replacement | Low | Approx. 80% | Approx. 7,200 | Approx. 5 min. |
| Whole Replacement | High | The entire ink absorbers | Approx. 9,000 | Approx. 20 min. |

- 1) Partial replacement

Remove the external housing (a set of the ASF cover, front cover, and middle frame), then replace the ink absorber.

(Time required: Approx. 5 min. including the operation check after replacement)

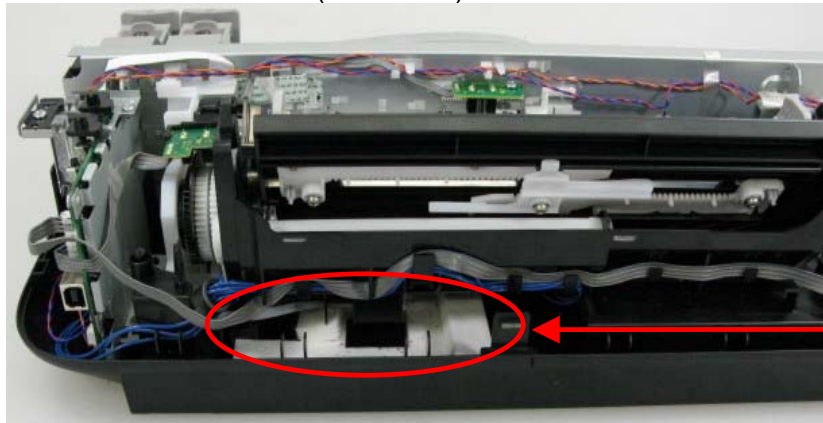
< How to perform the partial replacement >

- i. Remove the external housing, while referring to the photo below.

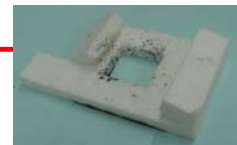


Remove 4 screws, then remove a set of the ASF cover, front cover, and middle frame.

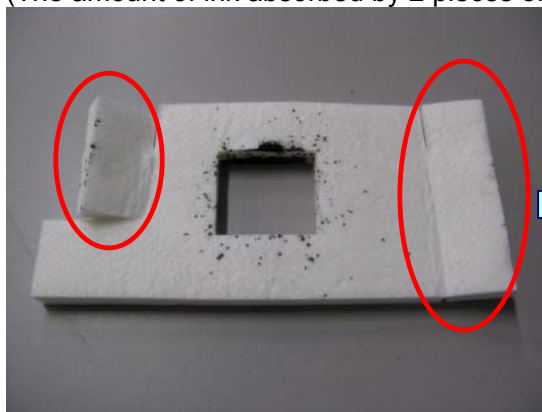
- ii. Pull out the ink absorber (QC2-8308).



Absorber for Partial Replacement



- iii. Install 2 pieces of the new ink absorber (QC2-8308), with one on top of the other, though only one is installed when shipped from the production site. (The amount of ink absorbed by 2 pieces of new ink absorbers is 80%.)



Unfold the absorber.



Put one absorber on top of the other, then install them into the printer.

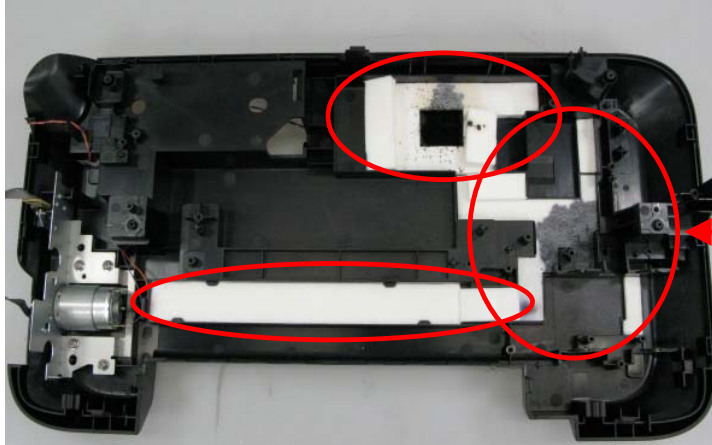
- iv. Set the ink absorber counter value to 20%.

2) Whole replacement

Remove the external housing and printer unit, then replace all the ink absorbers.

The ink absorber counter value must be reset to 0%.

(Time required: Approx. 20 min. including the operation check after replacement)



Absorbers for Whole Replacement

< Estimation of the ink absorber life >

For your reference in servicing, the estimated number of months until the ink absorber will become full is given in EEPROM information print.

Sample: DF = 00039 (It indicates that there will be 39 months before the ink absorber becomes full.)

```
iP2700 SN=VMTP21058 JPN V1.010 ST=2009/11/10-09:50 LPT=2009/12/02-12:01
D=002.5
DF=00039
ER(ER0=1687 ER1=1000 ER2=1684 ER3=1401 ER4=1000
ER5=0000 ER6=0000 ER7=0000 ER8=0000 ER9=0000)
PC(M=000 R=001 T=005 D=000 C=006 I=001)
TPAGE(TTL=00058)
CH_NEW_BK=(STD=00000 MINI=00000)
CH_NEW_CL=(STD=00000 MINI=00000)
```

- Note: 1. In the following cases, estimation of the ink absorber life will not be properly given:
- The printer is not connected to a computer.
 - The time is not properly set in the computer.
 - The ink absorber counter has been reset (to zero) before.

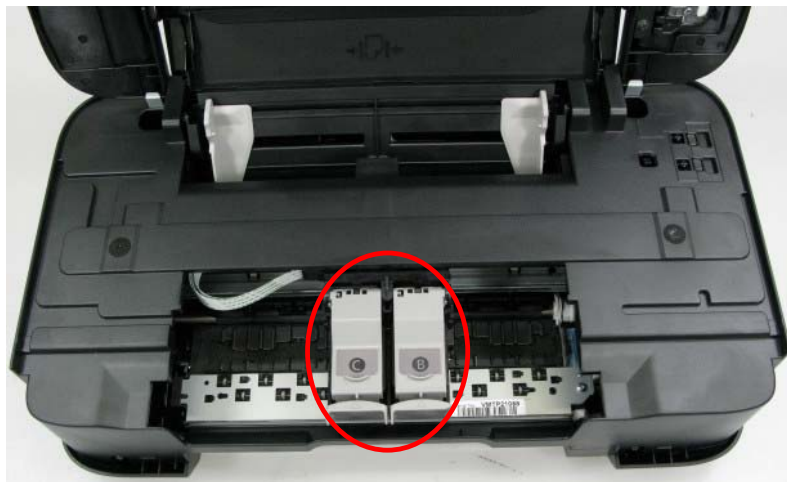
Reason: The ink absorber life is calculated using data of the printer installation date and the current ink counter value.

Data of the printer installation date is updated when the printer is connected to a computer.

2. The ink absorber life is calculated based on the user's usage (frequency of printing, printed items, etc.) before EEPROM information print (i.e. before repair servicing). It will vary according to the user's usage after EEPROM information print (i.e. after repair servicing).

(4) Ink mist cleaning

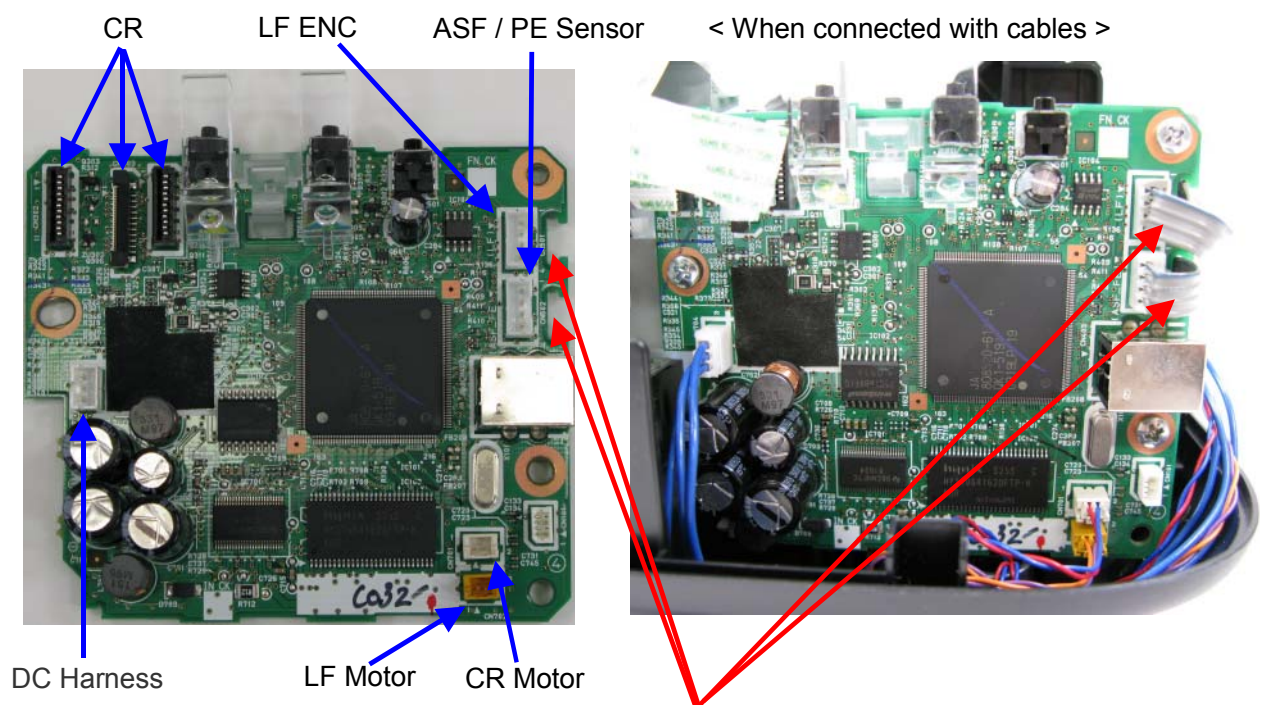
In repair servicing, using a soft and dry cloth or tissue, wipe ink mist off from both the inside and outside of the printer, especially from the ink cartridge locking covers (red-circled in the photo below).



(5) PCB connector layout and flexible cable wiring

In previous models, the ASF sensor, PE sensor, and LF encoder sensor were directly soldered to the logic board.

However, in the iP2700 / iP2770 / iP2780, connectors are adopted for their connection for higher serviceability.



Caution:

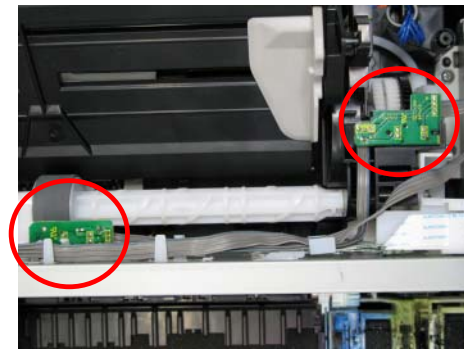
Be sure to fit the LF encoder and ASF/PE sensor cables into the space (slot) of the logic board. If not, the cables can be caught between the external housing (USB connector), even be damaged.

(6) Sensors

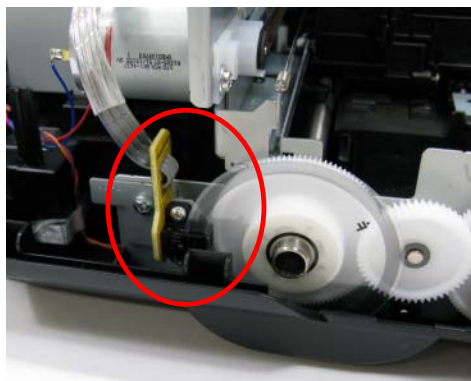
Carriage Encoder Sensor



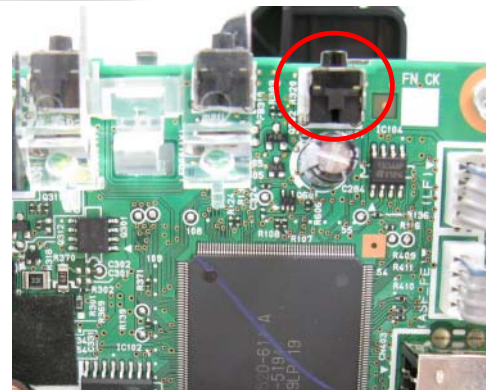
ASF / PE Sensor



LF Encoder Sensor

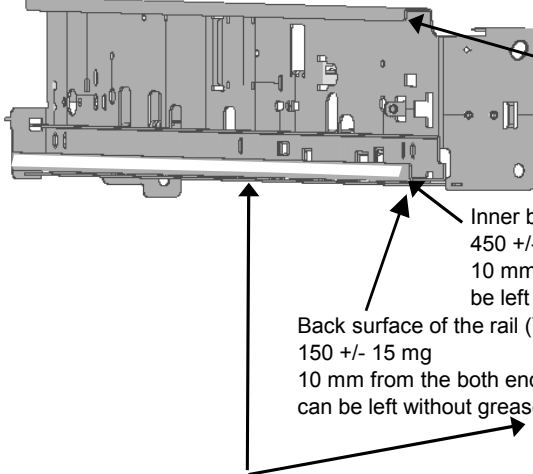
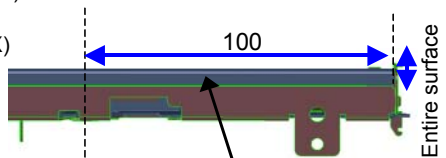
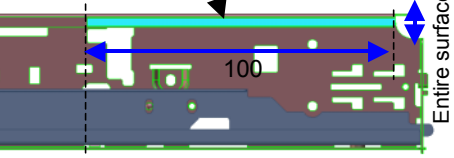
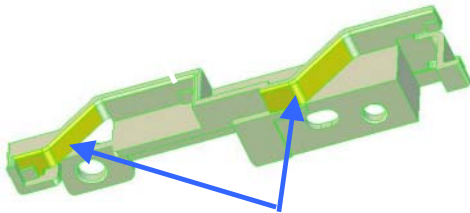
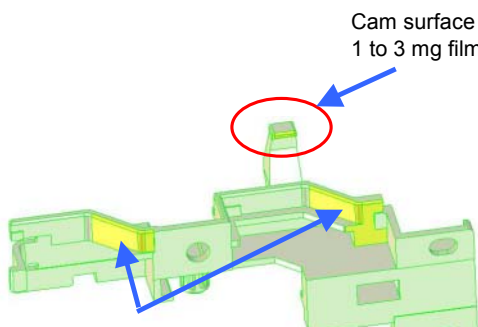


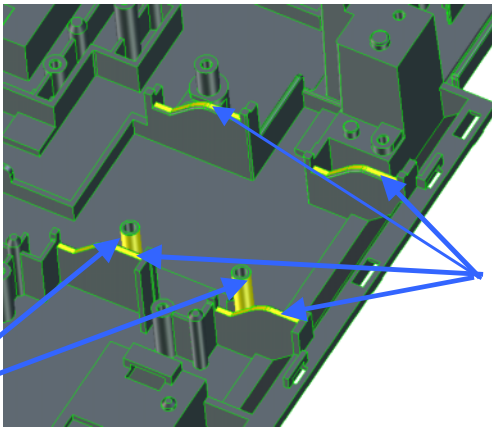
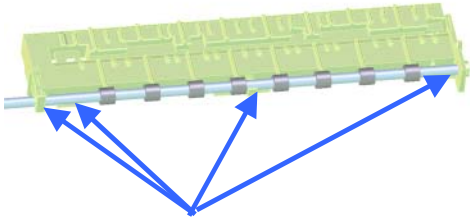
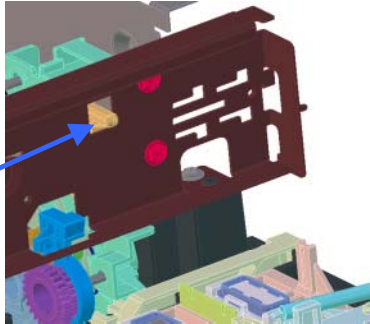
Cover Open Sensor



| Sensor | Function | Possible problem |
|-------------------------|---|--|
| ASF / PE sensor | Detects paper feeding and ejection from the rear tray. | - No paper in the rear tray - Paper jam in the rear tray |
| Cover open sensor | Detects opening and closing of the front cover. | - The carriage does not move to the center. |
| LF encoder sensor | Detects the number of times the LF encoder rotates, and controls its drive. | - Uneven printing |
| Carriage encoder sensor | Detects the position of the timing slit film, and controls printing. | - Uneven printing (due to grease attached to the timing slit film) - Carriage error |

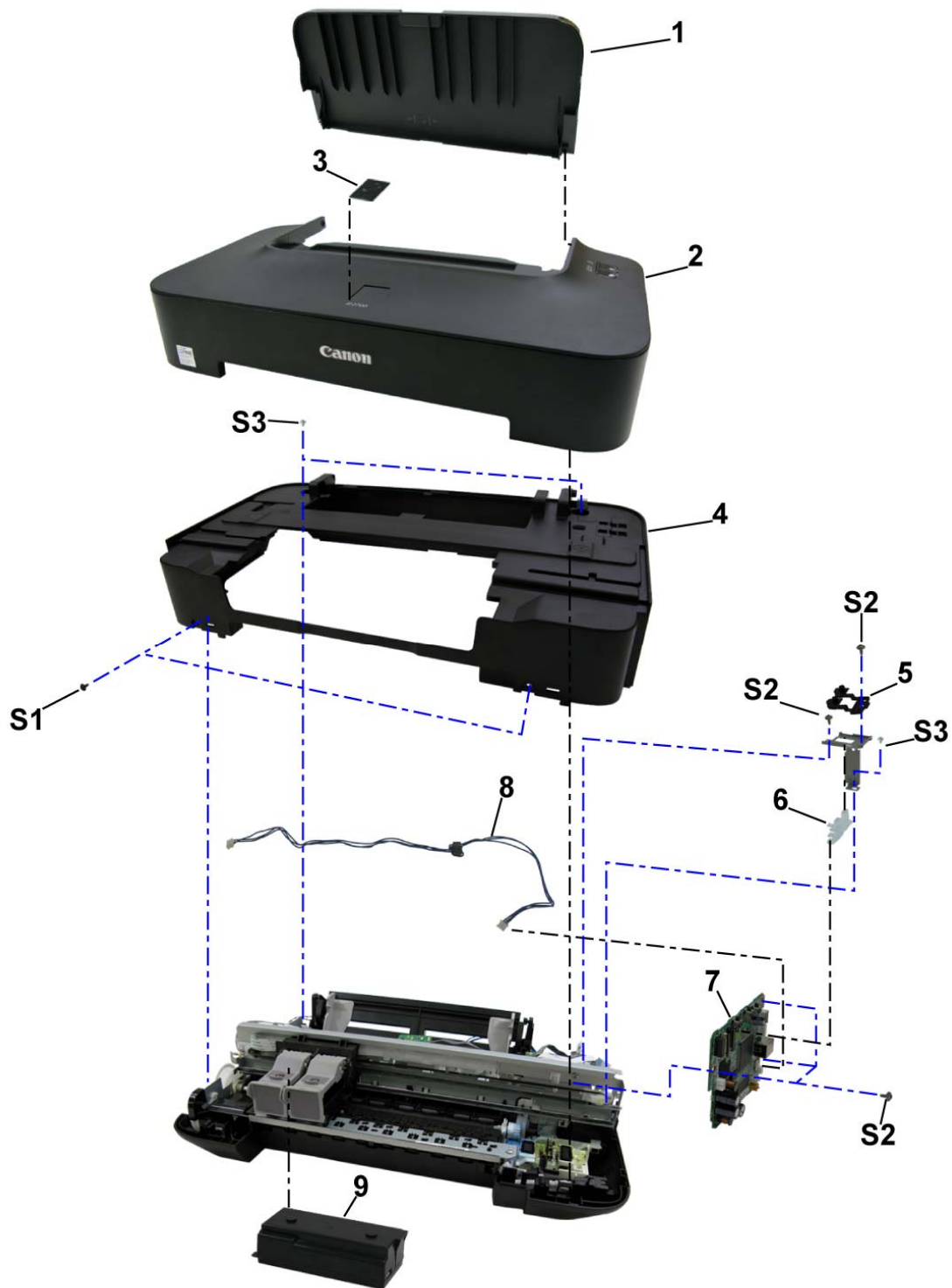
2-4. Grease Application

| Location & Grease Amount | |
|--|---|
| Printer Unit | FLO L KG-107A |
|  <p>Back surface of the chassis (Y): 155 +/- 20 mg 25 mm from the both ends (X) can be left without grease.</p> <p>Inner bottom surface of the rail (Z): 450 +/- 45 mg 10 mm from the both ends (X) can be left without grease.</p> <p>Back surface of the rail (Y): 150 +/- 15 mg 10 mm from the both ends (X) can be left without grease.</p> | <p>④ Grease to be applied to the area 1.2 mm from the bottom to 4.2 mm. Grease can extend to the area 0.7 mm from the bottom to 1.2 mm, and from 4.2 mm to 4.7 mm.</p>  <p>① Bottom surface of the rail (Z): 9 to 18 mg x 1 location</p> <p>⑥ 2.35 mm from the top edge to 3.85 mm</p> |
| <p>③ Front surface of the rail (Y): 220 +/- 20 mg (200 to 240 mg) 10 mm from the both ends can be left without grease.</p> | <p>Main Chassis</p> <p>FLO L KG-107A</p> <p>② Front surface of the chassis (Y): 9 to 18 mg x 1 location</p>  |
| PG Cover B | MOLYKOTE PG-641 |
|  | |
| <p>② PG cover B cam surface (yellow area in the diagram): 4.5 to 9 mg x 2 locations</p> | |
| PG Cover F | MOLYKOTE PG-641 |
|  | |
| <p>Cam surface contacting the Cap Holder Col: 1 to 3 mg film x 1 location</p> | |
| <p>② PG cover B cam surface (yellow area in the diagram): 4.5 to 9 mg x 2 locations</p> | |

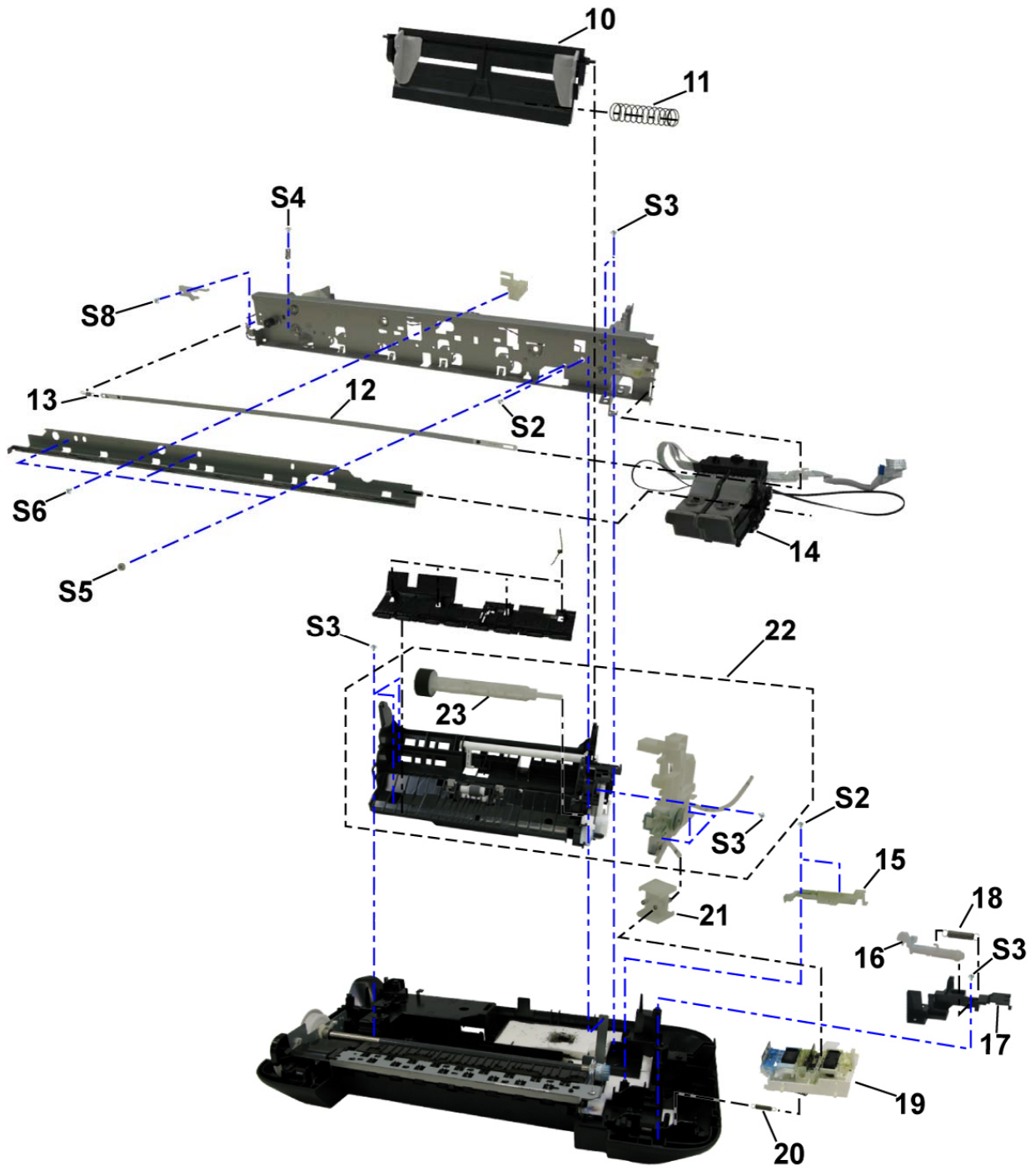
| | | |
|---|--|--|
| <p>Bottom Frame</p> |  | <p>9 to 18 mg x 4 locations</p> |
| <p>MOLYKOTE PG-641</p> | <p>9 to 18 mg x 4 locations (1 location = one side of the boss)</p> | |
| <p>Platen</p> | <p>FLO L KG-107A</p> | <p>Trigger Arm</p> |
|  | <p>Eject roller sliding portions: 4.5 to 9 mg x 4 locations</p> |  |
| | | <p>MOLYKOTE PG-641</p> |
| | | <p>Carriage sliding portion: 2 to 6 mg x 1 location</p> |

3. EXTERNAL VIEW / PARTS LIST

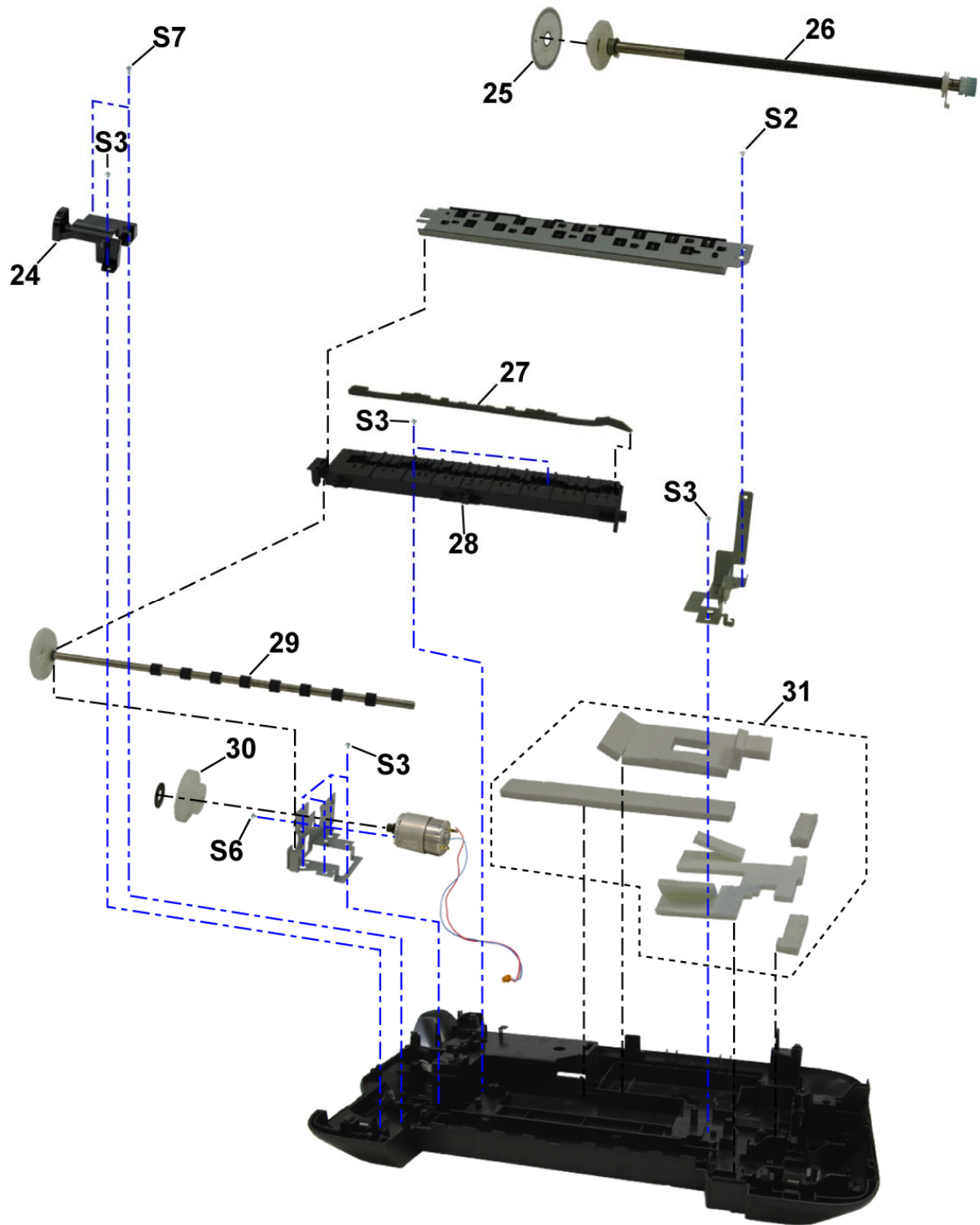
3-1. External Housing, Power Supply, Logic Board



3-2. Print Unit (1/2)



3-3. Print Unit (2/2)



3-4. Parts List

| Key | Part Number | Rank | Qty | Description | Remarks |
|-----|--------------|------|-----|--------------------------------|-------------------------------|
| 1 | QC3-2776-000 | J | 1 | COVER, ASF | |
| 2 | QM3-6638-000 | S | 1 | ACCESS COVER UNIT | iP2700 |
| 2 | QM3-7343-000 | S | 1 | ACCESS COVER UNIT | iP2770 |
| 2 | QM3-7344-000 | S | 1 | ACCESS COVER UNIT | iP2780 |
| 2 | QM3-7346-000 | S | 1 | ACCESS COVER UNIT | iP2772 |
| 2 | QM3-7347-000 | S | 1 | ACCESS COVER UNIT | iP2702 |
| 3 | QC3-0010-000 | J | 1 | EMBLEM | For Japan |
| 3 | QC3-0015-000 | J | 1 | EMBLEM | For other regions |
| 4 | QM3-6636-000 | J | 1 | MAIN CASE UNIT | |
| 5 | QC3-2781-000 | S | 1 | BASE, KEY | |
| 6 | QC3-2782-000 | S | 1 | GUIDE, LIGHT | |
| 7 | QM3-6640-000 | I | 1 | LOGIC BOARD ASS'Y | |
| 8 | QM3-7225-000 | S | 1 | DC HARNESS ASS'Y | |
| 9 | QK1-6508-000 | I | 1 | AC ADAPTER: 100/240V 50/60HZ | |
| 9 | QK1-6521-000 | I | 1 | AC ADAPTER: 100/240V 50/60HZ | CN |
| 10 | QM3-6639-000 | S | 1 | PRESSING PLATE ASS'Y | |
| 11 | QS4-2150-000 | S | 1 | SPRING, COMPRESSION | |
| 12 | QC3-3935-000 | I | 1 | FILM, TIMING SLIT STRIP | |
| 13 | QC2-8188-000 | S | 1 | SPRING, TIMING SLIT STRIP FILM | |
| 14 | QM3-6642-000 | I | 1 | CARRIAGE UNIT | |
| 15 | QC2-8300-000 | S | 1 | COVER, CAP-BLADE B | |
| 16 | QC2-8296-000 | S | 1 | LEVER, BLADE TRIGGER | |
| 17 | QC2-8315-000 | S | 1 | COVER, CAP-BLADE F | |
| 18 | QC2-8297-000 | S | 1 | SPRING, BLADE TRIGGER LEVER | |
| 19 | QM3-4019-000 | S | 1 | CAP-BLADE UNIT | |
| 20 | QC2-8289-000 | S | 1 | SPRING, CAP SLIDER | |
| 21 | QC2-8317-000 | S | 1 | JOINT, TUBE | |
| 22 | QM3-6367-000 | S | 1 | DRIVE ASS'Y | |
| 23 | QM3-4014-000 | S | 1 | PICK UP ROLLER ASS'Y | |
| 24 | QC3-2786-000 | S | 1 | COVER, LF MOTOR | |
| 25 | QC2-6384-000 | S | 1 | FILM, TIMING SLIT DISK | |
| 26 | QL2-3285-000 | S | 1 | FEED ROLLER ASS'Y | |
| 27 | QC3-4534-000 | S | 1 | PLATEN | |
| 28 | QC2-8244-000 | S | 1 | ABSORBER, PLATEN | |
| 29 | QL2-3283-000 | S | 1 | EJECT ROLLER ASS'Y | |
| 30 | QC2-8228-000 | S | 1 | GEAR, LF IDLE | |
| 31 | QY5-0287-000 | S | 1 | ABSORBER KIT | |
| | QH2-2716-000 | V | 1 | CORD, POWER | 220V-240V (EUM, EMB, ASA, MY) |
| | QH2-2719-000 | V | 1 | CORD, POWER | 100V-120V |
| | QH2-2721-000 | V | 1 | CORD, POWER | 220V-240V (KR) |
| | QK1-0776-000 | V | 1 | CORD, POWER | 220V-240V (AU) |
| | QK1-1355-000 | V | 1 | CORD, POWER | 220V-240V (BR) |
| | QK1-1675-000 | V | 1 | CORD, POWER | 220V-240V (GB, HK) |
| | QK1-2017-000 | V | 1 | CORD, POWER | 100V-120V (TW) |
| | QK1-3048-000 | V | 1 | CORD, POWER | 120V-240V (LAM, CHN) |
| | QK1-3761-000 | V | 1 | CORD, POWER | 100V (JP) |
| S1 | XA9-1807-000 | G | | SCREW, TP M3x8 | |

| Key | Part Number | Rank | Qty | Description | Remarks |
|-----|--------------|------|-----|---------------------------------|---------|
| S2 | XB1-2300-405 | G | | SCREW, MACH.BH, M3x4 | |
| S3 | XA9-1493-000 | G | | SCREW, TP M3x8 | |
| S4 | XA9-1752-000 | G | | SCREW, TAP, WASHER HEAD, M3x12 | |
| S5 | XA9-1818 | | | | |
| S6 | XB1-2260-305 | G | | SCREW, MACH. TRUSS HEAD, M2.6x3 | |
| S7 | XB1-2300-605 | G | | SCREW, MACHINE, M3x6 | |
| S8 | XB6-7300-605 | G | | SCREW, MACHINE, TP, M3x6 | |
| | XB1-2200-505 | G | | SCREW, MACH, TRUSS HEAD, M2x5 | |
| | XB4-7300-805 | G | | SCREW, TP, BH3x8 | |